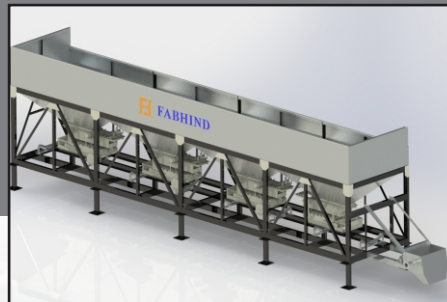
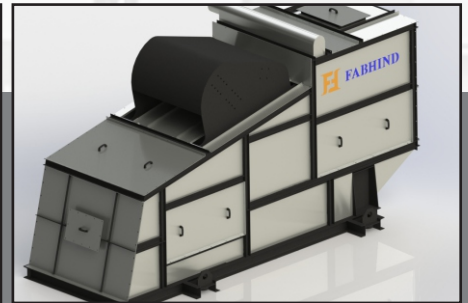


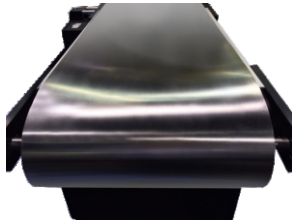
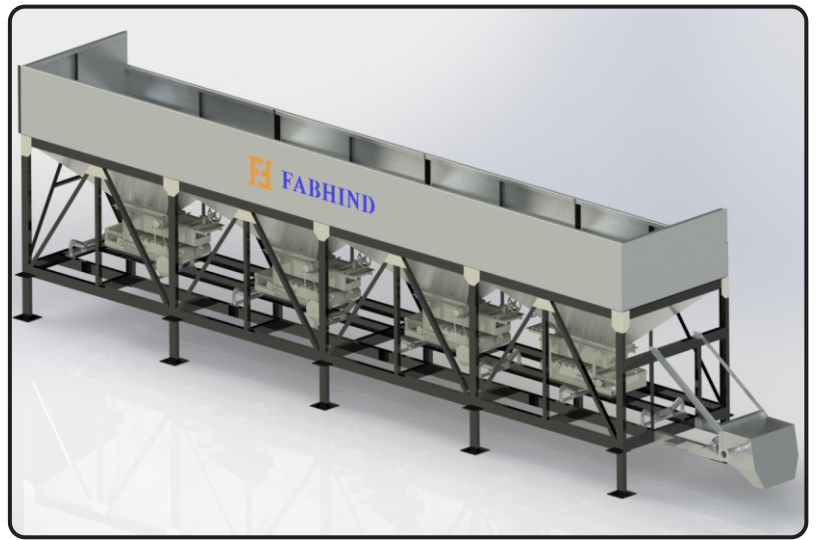
FH FABHIND®



ASPHALT BATCH MIX PLANT

SPARE PARTS

FOUR BIN FEEDER



GATHERING BELT (600X3 PLY X 24 .MTR)
AUXILIARY BELT (450 X 3 PLY X 2.9 M)



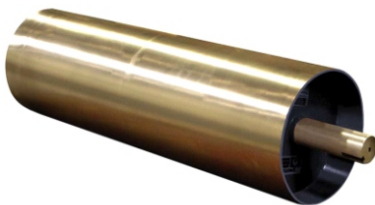
V-BELT B62



MOTOR : 2 HP / 1440 RPM/ FOOT
MOTOR : 5 HP / 1440 RPM /FOOT



ROLLER 89 X 210 MM / V. ROLLER 89 X 200
BIN ROLLER 89 X 550 / RETURN ROLLER 89 X 650



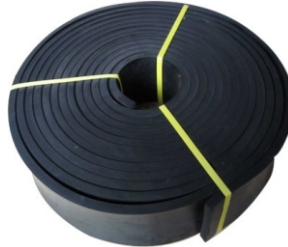
HEAD/TAIL PULLEY



BIN GEAR BOX : C : 20 : 1 (SMSR)
GEATHRING GEAR BOX : D : 13 : 1 (SMSR)



VIBRATING MOTOR 0.25/2900RPM



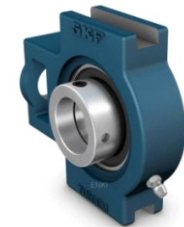
SKIRT RUBBER



HAND WHEEL FOR AUXILIARY GATE



V-PULLEY : 12" X 2 B , 3" X 2 B , 6" X 2 B
PULLEY FOR GEARBOX(12"X2B)
PULLEY FOR MOTOR SIZE: 3" (3-2-B)



BEARING UCP209, UCT-209



ROLLER STAND FRAME



TAKE UP SCREW

SLINGER CONVEYOR



DRYING DRUM



DRUM ROLLER & SHAFT



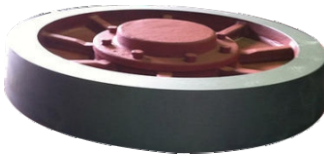
BEARING UCP 322



BEARING 32212 TAIPPRANER



DRUM GEAR BOX 27:1, 10 HP



THRUST ROLLER



DRUM MOTOR 10 HP / 1440/ FLG



**DRUM SPROCKET
14 T X 2" P & 17 T X 2" P**



**DRUM CHAIN
2" P X 10 FT / 44.5" P X 10 FT**



TRUNION RING



BURNER NOZZLE : 500



BURNER IMPELLER (FAN)



BURNER FRAME CONTROL RELY



SOLENOID VALVE (COIL)

DRYING DRUM



BURNER L.D.O PUMP



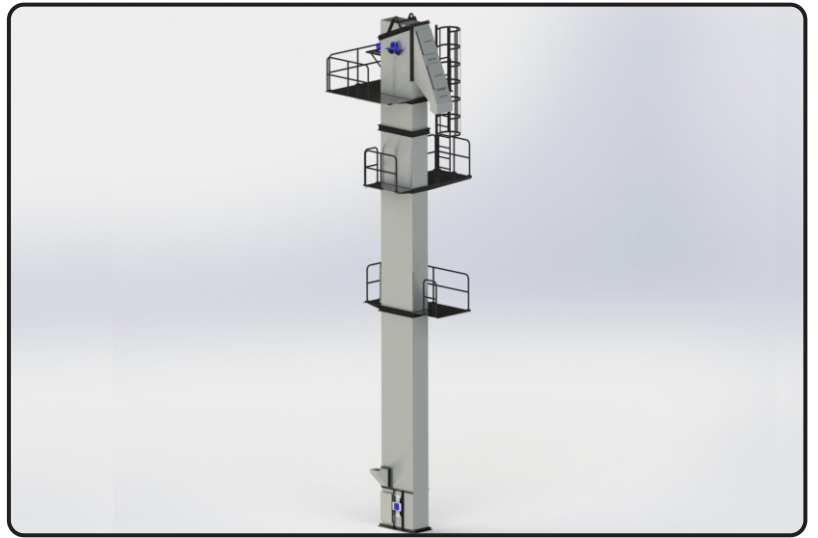
PHOTO CELL



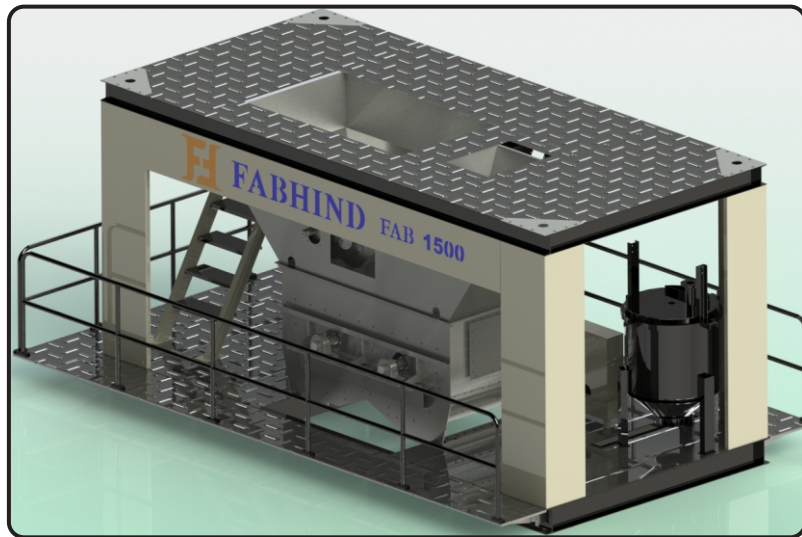
DIFFUSER PLATE



HOT ELEVATOR



PUG MILL



PUGMILL SHAFT



BITUMEN THREE WAY VALVE (JECKETEEK)



BITUMEN SPRAY PUMP 300 L



MOTOR 7.5 HP / 1440 RPM



LOAD CELL 300 KG (S TYPE)



AMPLIFIER CARD



CYLINDER 80 X 100, 80 X 200



CYLINDER 63 X 50, 100 X 200



CYLINDER 125 X 900



FRL UNIT



REED SWITCH



SOLENOID VALVE

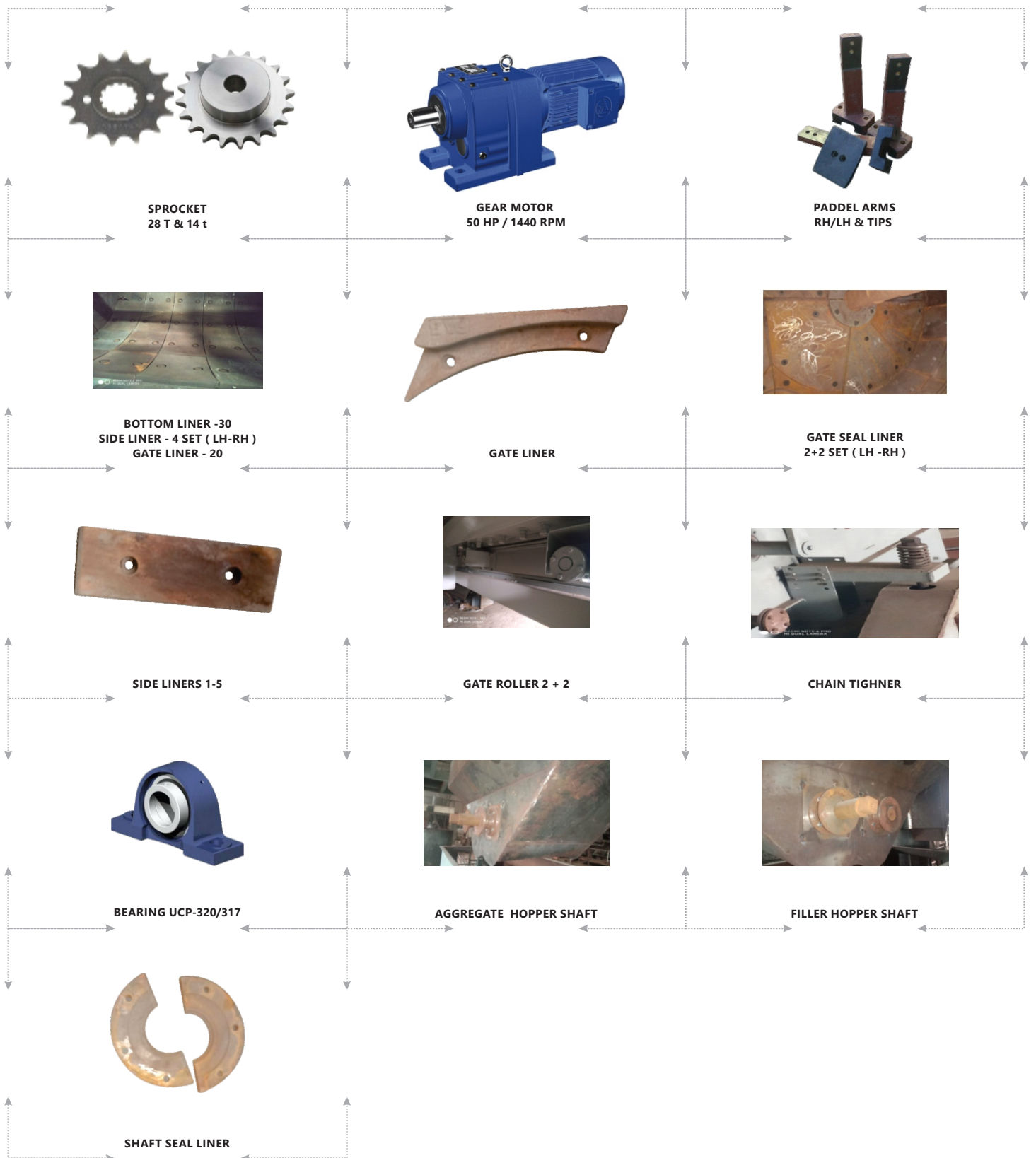


I BOLT

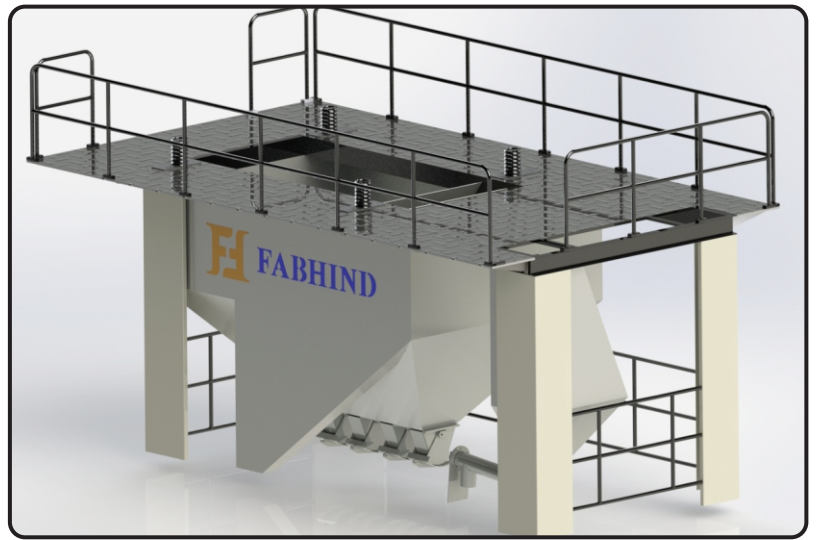


CHAIN 2.5" X 20FG

PUG MILL



HOT BIN



ROTORY VALVE (6 INCHES)



LEVEL SENSOR



FRL UNIT



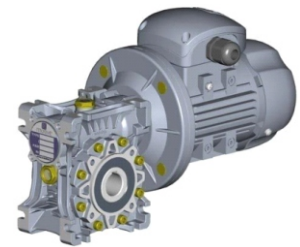
DOUBLE PNEUMATIC SOLENOID VALVE



REED SWITCH



PNEUMATIC CYLLINDER 100x350



GEARBOX WORM TYPE



LEVEL SWITCH

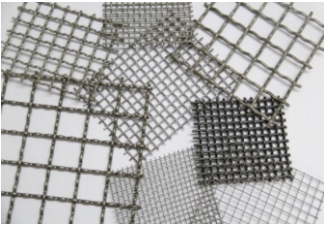
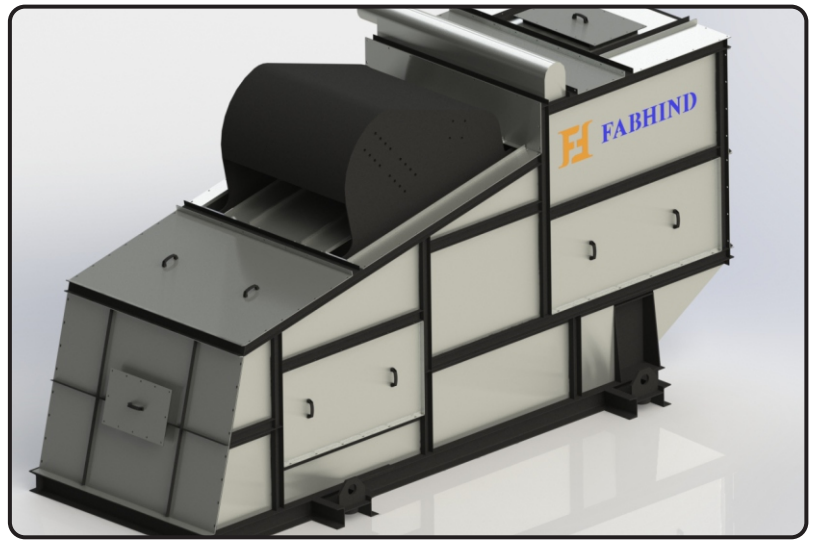


SILENCER (1/2 INCHES)



MOTOR 2HP FLANGE MOTOR

VIBRATING SCREEN



WIRE MESH 30 x 30, W/D 8, (1150 x 1300)
WIRE MESH 30 x 30, W/D 8, (1150 x 1650)
WIRE MESH 16 x 16, W/D 6, (1150 x 1300)
WIRE MESH 16 x 16, W/D 8, (1150 x 1650)
WIRE MESH 7.5 x 7.5, W/D 3, (1150 x 3670)
WIRE MESH 3.5 x 3.5, W/D 1.75, (1150 x 3550)



VIBRATOR MOTOR (10 HP / 2800 RPM)



SPRING
(126 X 140 MM LA) (99X220MM LA)



HALF THREAD BOLT M27X 180 (10.9)

BAGHOUSE



BAGS
4"x2250, 4"x2450, 4"x2750



CAGES
4"x2200, 4"x2400, 4"x2700



WORM GEAR BOX 90:30



THERMO COUPLE



MOTOR 2HP / 1440 / FLG



BURNER PHOTO CELL



LIMIT SWITCH



BEARING UCP-210



BEARING UCF-212



BEARING 51106A



I BOLT 30 mm



BREAK SHOE

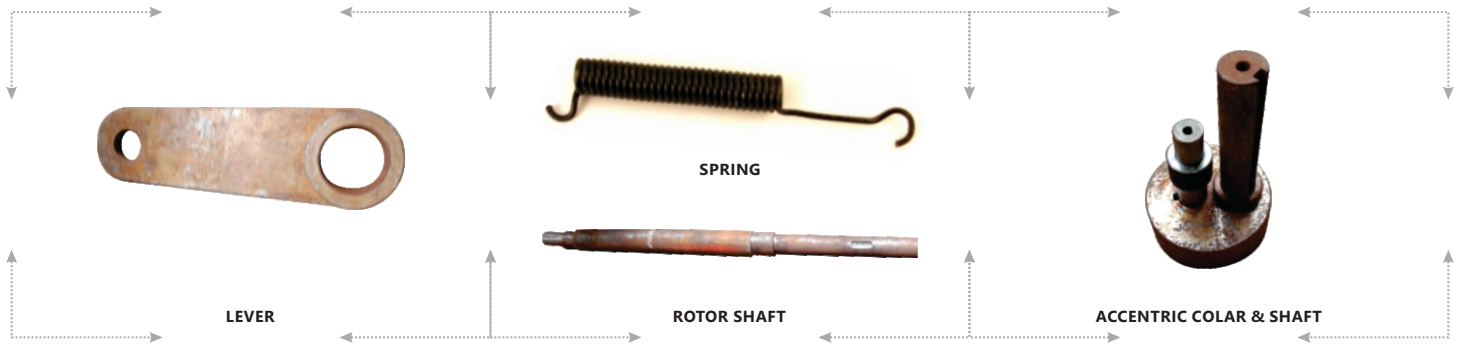


RACHET WHEEL



ACTUATOR

BAGHOUSE



BITUMEN TANK





Plot No.16, Khodiyar Estate, I/S.shakriba Estate,
Phase - IV, Vatva G.I.D.C, Ahmedabad-382445, Gujarat, INDIA.

Phone : +91-79-40301472

Mobile : +91 - 8980014640 / 8980014621 / 8980014771

E-mail : info@fabhind.com, sales@fabhind.com

Web : www.fabhind.com